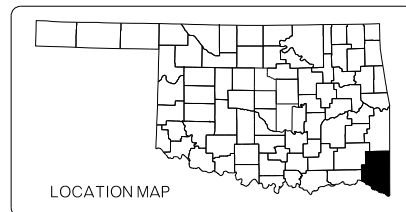


OKLAHOMA DEPARTMENT OF TRANSPORTATION						
FED. ROAD DIST. NO.	STATE	JOB PIECE NO.	FISCAL YEAR	SHEET NO.	TOTAL SHEETS	
2	OKLA.	RRCS-245B(050)CS	2017	1	19	
DESCRIPTION		REVISIONS		DATE		



STATE OF OKLAHOMA
DEPARTMENT OF TRANSPORTATION

PLAN OF PROPOSED
STATE HIGHWAY

FEDERAL AID PROJECT NO. RRCS-245B(050)CS

CROSSING IMPROVEMENT & R/R SIGNALS

McCURTAIN COUNTY

CONTROL SECTION NO. 70-45-02, 70B-45-50

STATE JOB NO. 33075(56)

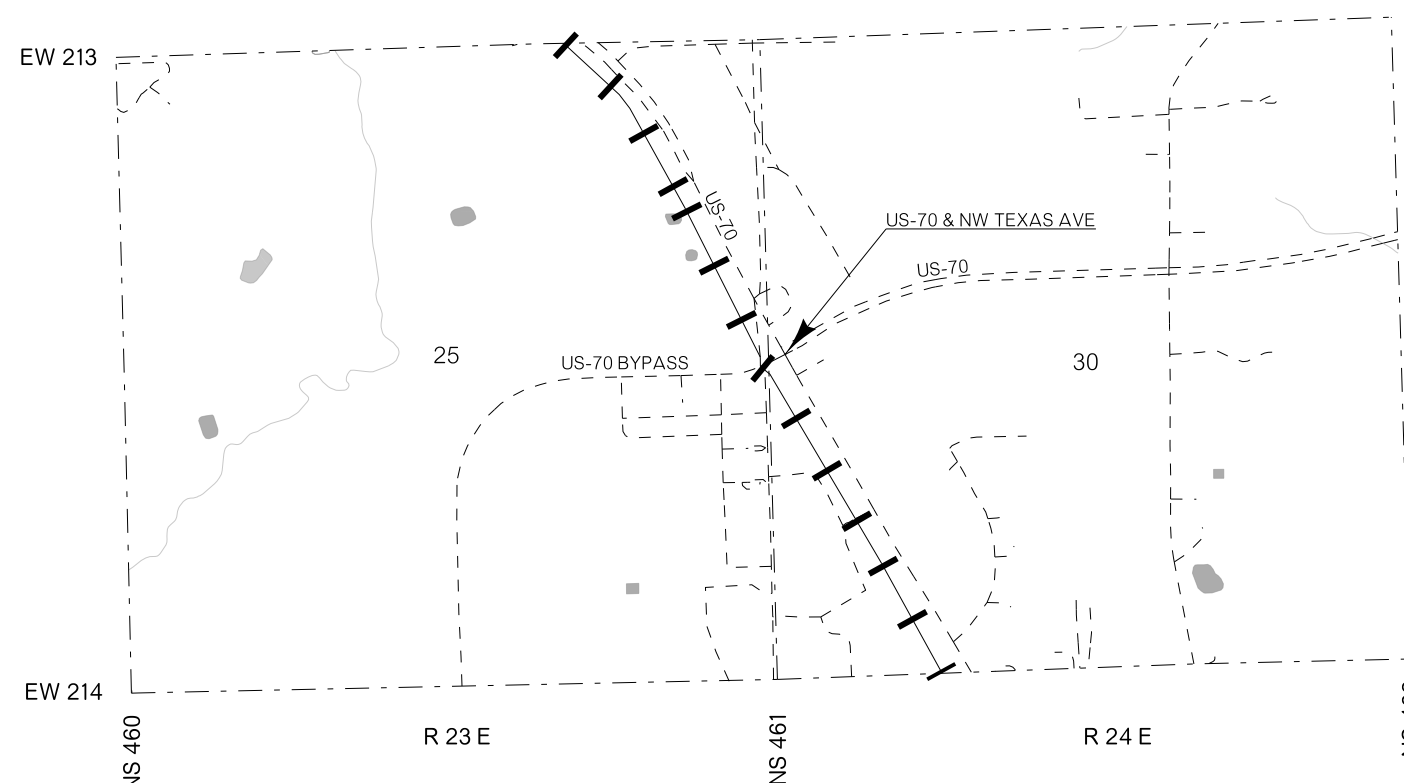
US-70B & NW TEXAS AVE

INDEX OF SHEETS

SHEET NUMBER	SHEET DESCRIPTION
0001	TITLE SHEET
AT01	SUMMARY OF PAY QUANTITIES & NOTES (SIGNAL)
AT02	SUMMARY OF PAY QUANTITIES & NOTES (SIGNING & STRIPING)
AT03	SUMMARY OF PAY QUANTITIES & NOTES (TRAFFIC CONTROL)
T001	TRAFFIC SIGNAL PLAN
T002	PHASING & SEQUENCE
T003	WIRING DIAGRAM
T004	MAST ARM SIGNS & SUMMARY
T005	SIGN SUMMARY
T006	SPECIAL SIGNS
T007	ROUTE ASSEMBLY
T008	SIGNING (WEST)
T009	SIGNING (EAST)
T010	SIGNING (NORTH)
T011	SIGNING (SOUTH)
T012	STRIPING
T013	TRAFFIC CONTROL DETAIL (SHOULDER CLOSURE)
T014	TRAFFIC CONTROL DETAIL (SIGNAL ADJUSTMENT)
T015	TRAFFIC CONTROL DETAIL (FLAGGER)

STANDARDS TO BE INCLUDED

TRAFFIC		
TCS1-1-01	PM1-1-02	PMAP1-2-00
TCS2-1-00	PM2-1-01	SPBP1-1-00
TCS3-1-01	PM3-1-02	SA1-1-02
TCS4-1-01	PM6-1-00	SNS1-1-02
TCS5-1-00	PM7-1-00	PWD1-2-00
TCS6-1-02	PM8-1-00	CFD1-2-00
TCS7-1-02	RSD1-1-00	CC1-1-00
TCS8-1-00	RSD2-1-00	TSSP1-1-00
TCS9-1-01	WSD1-1-00	MAD1-1-00
TCS14-1-00	WSD3-1-00	RPAD1-1-00
TCS15-1-00	MSD1-1-00	MPAD1-1-00
TCS18-1-01	MSD2-1-00	MDL2-1-00
TCS19-1-01	MSD3-1-01	CCD1-1-00
TCS20-1-00	MSD4-1-00	PBD1-1-00
	MSD5-1-00	
	SBS1-1-00	
	SBS2-1-00	
	SBS3-1-00	
	SBS4-1-00	
	GMS1-1-00	
	SSP1-1-02	
	SSA1-1-00	



CITY OF IDABEL

OKLAHOMA DEPARTMENT OF TRANSPORTATION
 ENGINEER MANAGER: TAREK MAAROUF
 CHECKED BY: TAREK MAAROUF
 ENGINEER INTERN: G. FADEL
 PROJECT ENGINEER: K. LEDERING
 SQUAD MEMBERS: J. FOX, A. ANDERSON, C. DIVIS, T. SHIELDS
 SQUAD SUPERVISOR: B. ABRAHAM

CONVENTIONAL SYMBOLS

- PROPOSED ROAD
- RAILROADS
- RANGE & TOWNSHIP
- SECTION LINES
- QUARTER SECTION LINES
- FENCES
- GROUND LINE
- EXISTING ROADS
- BASE LINE
- GRADE LINES
- TELEPHONE & TELEGRAPH
- POWER LINES
- BUILDINGS
- OIL WELL
- DRAINAGE STRUCTURES - IN PLACE
- DRAINAGE STRUCTURES - NEW
- RIGHT-OF-WAY LINES - EXISTING
- RIGHT-OF-WAY LINES - NEW
- CONTROLLED ACCESS
- RIGHT-OF-WAY FENCE

2009 OKLAHOMA STANDARD SPECIFICATIONS FOR HIGHWAY CONSTRUCTION GOVERN, APPROVED BY THE U.S. DEPARTMENT OF TRANSPORTATION, FEDERAL HIGHWAY ADMINISTRATION, JANUARY 4, 2010.

PREPARED BY:
OKLAHOMA DEPARTMENT OF TRANSPORTATION
TRAFFIC ENGINEERING DIVISION
TAREK A. MAAROUF, P.E.
OKLA. REG. NO. 25181
DATE: 07-13-17

REGISTERED PROFESSIONAL ENGINEER
TAREK AHMAD MAAROUF
25181
OKLAHOMA

OKLAHOMA DEPARTMENT OF TRANSPORTATION DATE APPROVED: _____ BY: _____ CHIEF ENGINEER	DEPARTMENT OF TRANSPORTATION FEDERAL HIGHWAY ADMINISTRATION DATE APPROVED: _____ BY: _____ DIVISION ADMINISTRATOR
PROJECT NO. RRCS-245B(050)CS COUNTY McCURTAIN HIGHWAY US-70B SHEET NO. 0001	